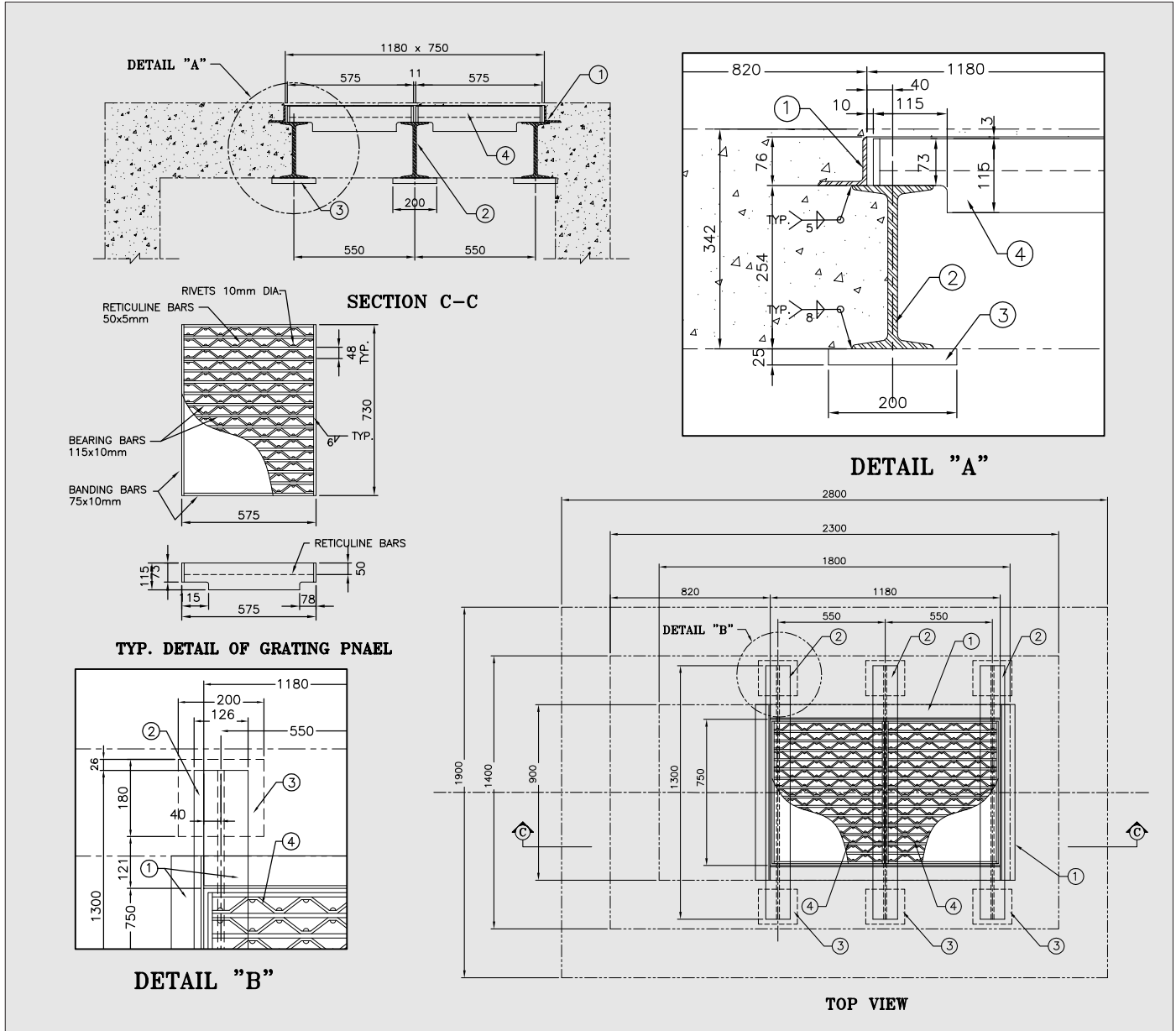


2364 Haines Rd., Unit 20-21 Mississauga, Ontario Canada

Galvanized Steel Grating Panel *MODEL NO. Type-P*



Note:

- 1) All steel members shall be hot dipped galvanized after fabrication.
- 2) Welding shall conform to CSA W47.1-M1992 CSA W59-M1989
- 3) Welded surface remains as welded.

Materials

#	QTY	MATERIALS	DESCRIPTION
1	1	Galv. steel CSA G40.21 M-300W	76 x 76 x 6 angle frame
2	3	Galv. steel CSA G40.21 M-300W	S 250 x 52 x 1300 LG support beams
3	6	Galv. steel CSA G40.21 M-300W	180 x 200 x 25 bearing plates to be welded to each end of support beam item #2
4	2	Galv. steel CSA G40.21 M-300W	Riveted Steel Grating Reticuline bearing bars 115 x 10mm @ 48mm c/c and rivets 10mm dia. and reticuline bars 50 x 5mm @ 125mm c/c grating supplied in 1-sections as shown banded with 75 x 10mm flat bar