

2364 Haines Rd., Unit 20-21 Mississauga, Ontario Canada

Ditch Inlet

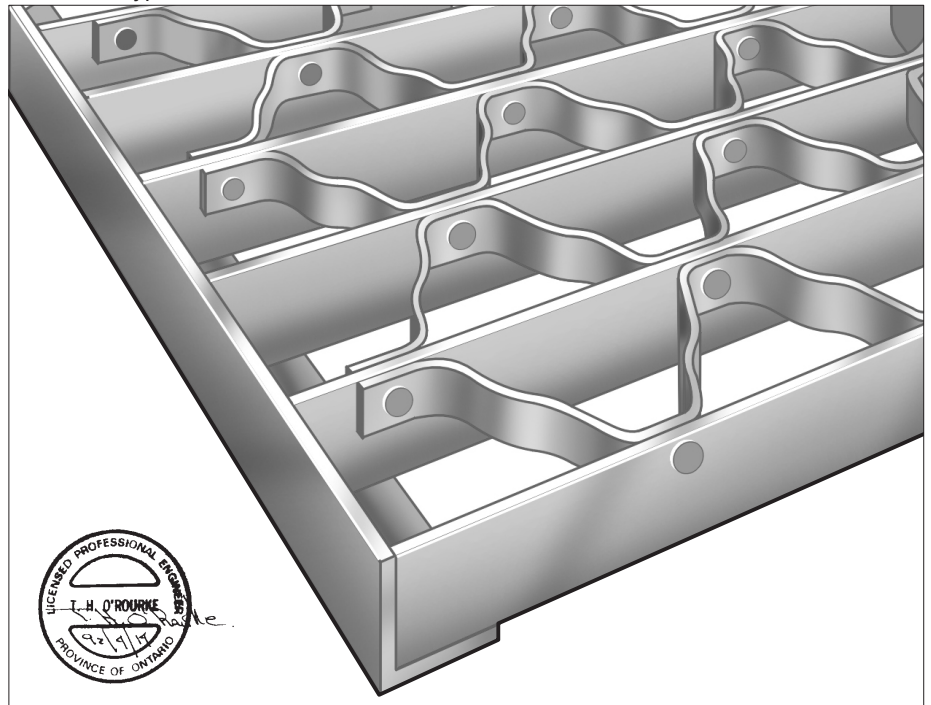
Type 4001

Stepcon riveted grating provide maximum strength and rigidity, designed specifically for demands of heavy duty trench and drain cover installations. Conforms to OPSD-403.01, OPSS-1850, accepted for M.T.O. use. Steel galvanized to meet CSA G164M.

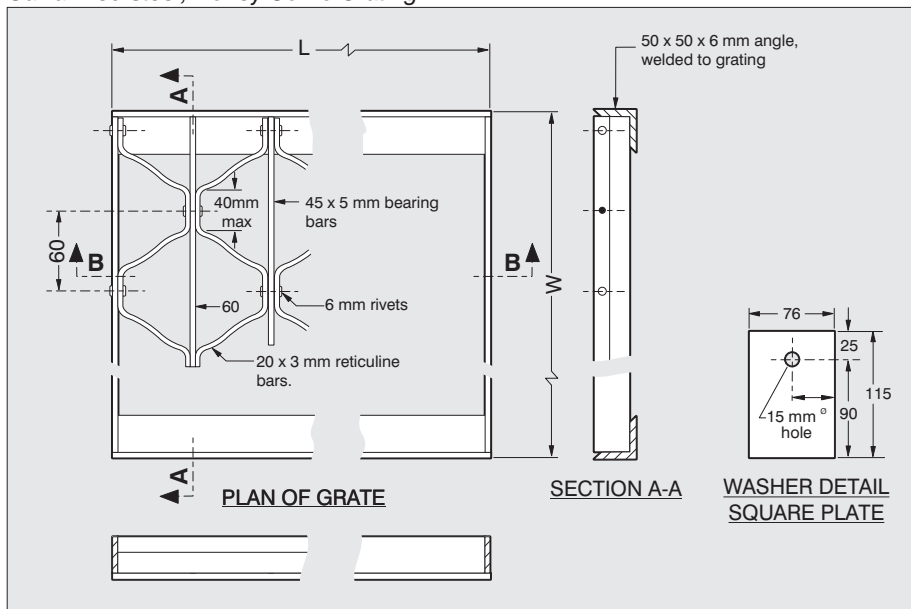
Installation

All grating should always be installed with cross bars flush with topside bearing bars. Installation of grating upside down will severely reduce load capacity. Galvanized anchor threads (2) to be cast in place 38 mm to center (inside of recess).

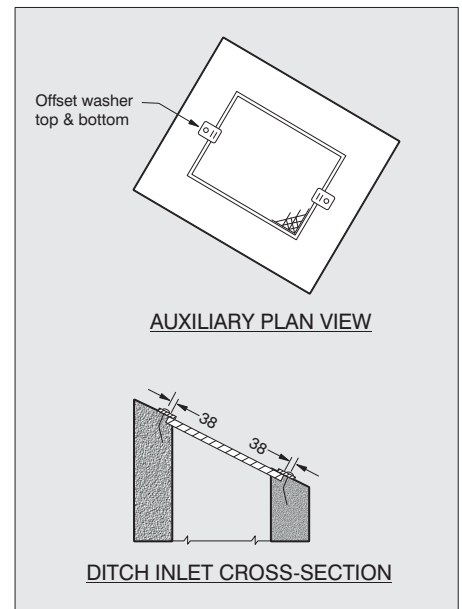
Ditch Inlet Type 4001



Galvanized steel, Honey Comb Grating



Cross section



Sizes

GRATE TYPE	LENGTH (MM)	WIDTH (MM)	ORDER MODEL NUMBER
A	762	768	4001
B	1338	768	4002
C	1465	768	4003

Hardware

FASTENERS	MODEL NO.
1/2-13 x 3 3/4 Wedge Anchor Nut & Galvanized Square Plate Washer.	4112 (2 required per grate).
Galvanized Square Plate Washer.	4113 (2 required per grate).