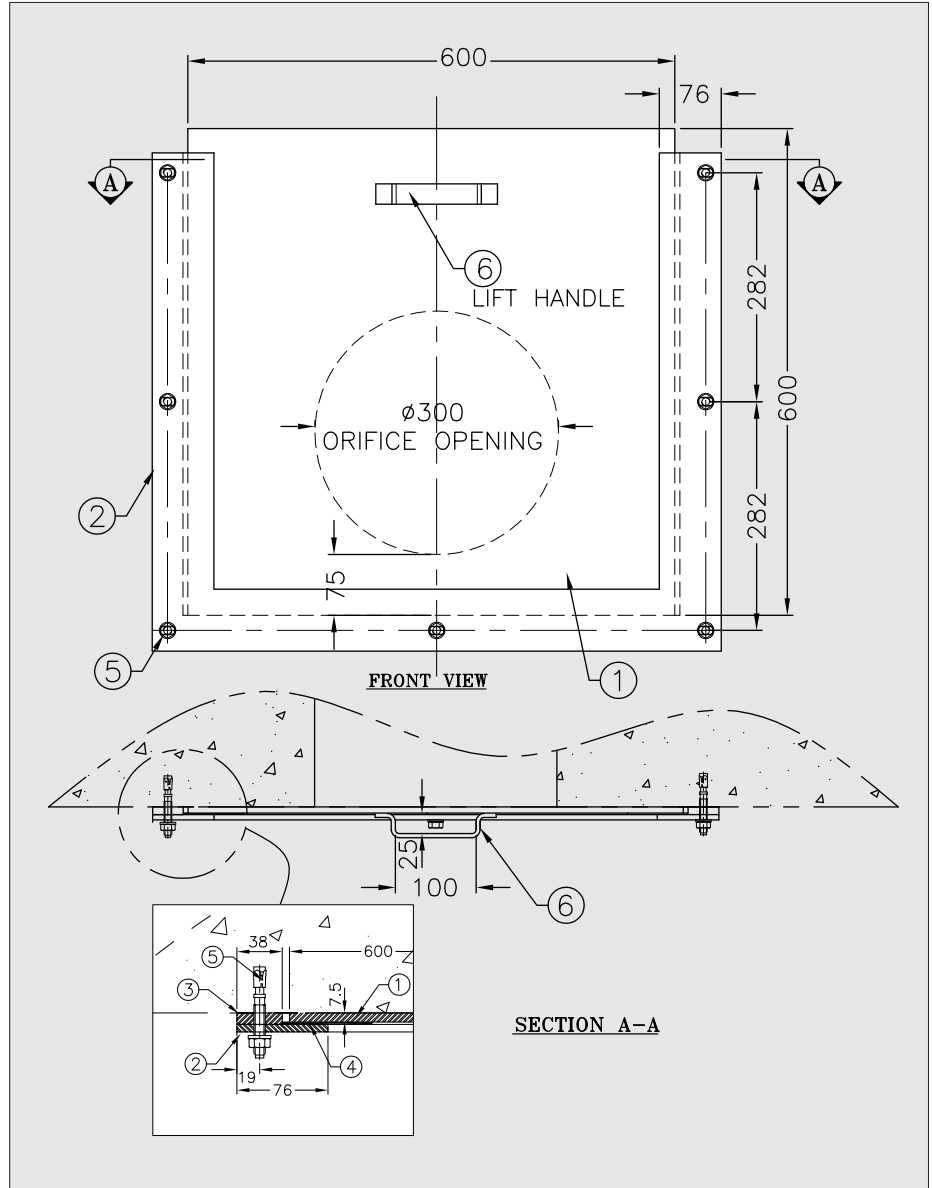
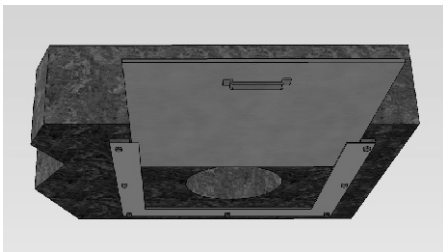
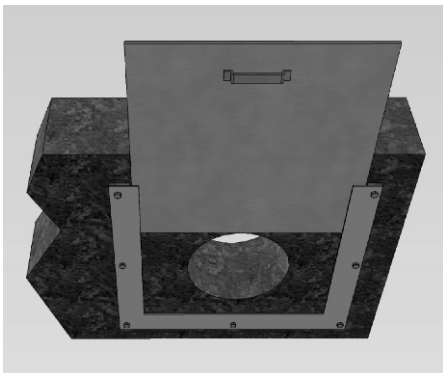


2364 Haines Rd., Unit 20-21 Mississauga, Ontario Canada

**Aluminum Sliding Orifice Plate**

MODEL NO. Type-Plate-10

**Application**



**Note:**

- 1) All aluminum surfaces in contact with concrete shall receive 2 coats of bituminous paint.
- 2) Welding shall conform to CSA W47.2 & CSA W59.2 latest edition.
- 3) Welded surface remains as welded.

**Materials**

#	QTY	MATERIALS	DESCRIPTION
1	1	Aluminum 6061-T6	600 x 600 x 7.5mm THK. SLIDING PL. c/w (2) SR 5/8" ST. STL. Handles
2	1	Aluminum 6061-T6	FB 6 x 76mm Welded Guide Frame c/w (7) 14.3ø x 20mm LG. Slotted Holes
3	3	Aluminum 6061-T6	FB 9.5 x 76mm Spacer Welded to item #2 c/w (7) 14.3ø x 20mm LG. Slotted Holes
4	3	Neoprene	4.8 THK. x 76mm Neoprene Gasket epoxy glued to item #2
5	7	Stainless Steel 304	13ø x 95 LG Wedge Anchor c/w nut and lock washer
6	1	Aluminum	FB 4.8 x 25mm Lift Handle Bend and welded to item #1
7			